

# THERMAL LINER PANELS

DESIGNED TO REFACE AND INSULATE EXISTING INSULATED PANELS

## IMPROVE PANEL APPEARANCE AND INCREASE PERFORMANCE WITH THERMAL LINER PANELS

- Restore panel damage from normal wear and tear
- Refurbish corroded, discolored or stained panel surfaces.
- Repair joint displacement due to condensation or icing conditions

## GET MORE YEARS OUT OF YOUR EXISTING WALK-IN

- Existing panel life can be increased by up to 5 years
- R-value improvement is achieved by re-facing and insulating existing panels
- Low-profile panels can match existing finishes, providing a fresh appearance
- Meets NSF standards

## HOW DO THEY WORK?

- Easy to install liner panels wrap the existing panels
- Constructed of a durable panel face material bonded to an insulated core
- Attached by a proprietary strip assembly system that includes an integral gasket seal (can be NSF Certified)
- Thermal liner panel provides an additional layer of insulation which improves thermal performance



MAKE YOUR WALK-IN  
**LOOK LIKE NEW!**



## PANEL FACERS

- 26ga Embossed Aluminum-Zinc Alloy
- .032" Embossed White Aluminum
- Fiberglass Reinforced Plastic (FRP)
- **Multiple color options available!**

## PRODUCTION SIZES

Panels are all field cut for custom applications and are produced in 47" widths

## THICKNESS

- 0.75" and 2"

INSULATION CORE THICKNESS AND R-VALUE AVAILABLE	
Nominal Thickness	Thermal R-Value
Inches	°F• ft²• hr/Btu @ 75°F mean temp.
0.75	5.0
2	13.1

INSULATION IS CLASS A, ASTM E-84 TESTED FOR FLAME SPREAD AND SMOKE DEVELOPED INDEXES, AND UL 1715 TESTED FOR THERMAL BARRIER PERFORMANCE, FOR COMPLIANCE WITH IBC 2603.

## PRODUCT APPLICATIONS

Joint displacement due to the following issues:

- Condensation
- Icing Conditions

Panel damage due to the following issues:

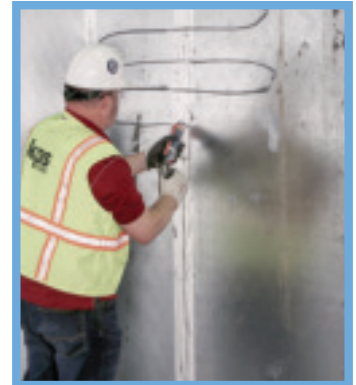
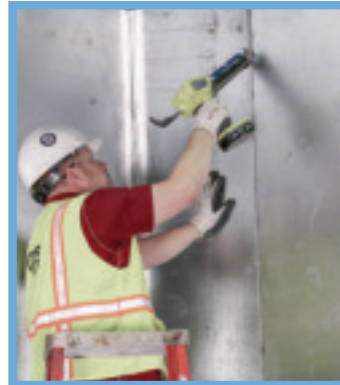
- Normal wear and tear
- Discolored, stained or corrosion of panel surfaces
- Impact by carts, lifts, or pallet jacks

Addressing food safety issues

Walk-in not keeping temperature

Not appropriate for cooler to freezer product conversion

## QUICK AND COST-EFFECTIVE OPTION TO REPLACEMENT



Order Online  
parts.kpsglobal.com



Questions?  
parts@kpsglobal.com



Call to Order  
682-317-5355