



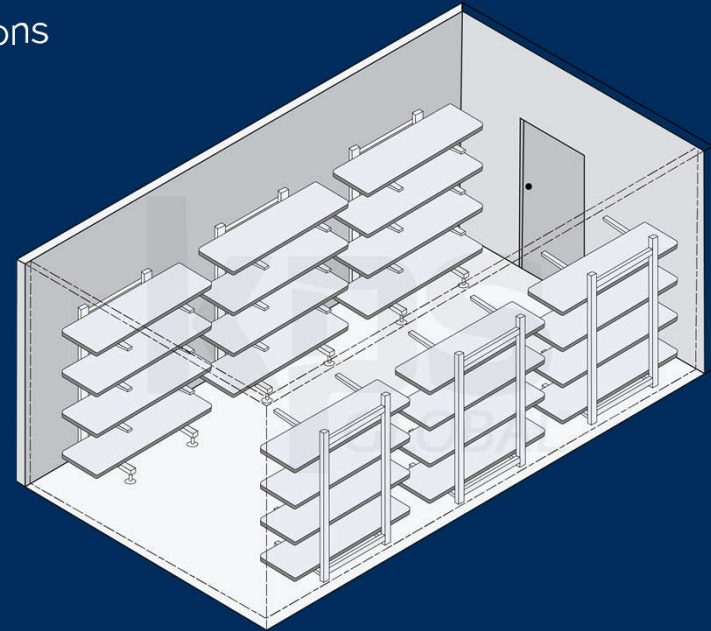
EMERGENCY  
RESPONSE  
MORTUARY  
COOLERS

# TEMPORARY MORTUARY COOLERS

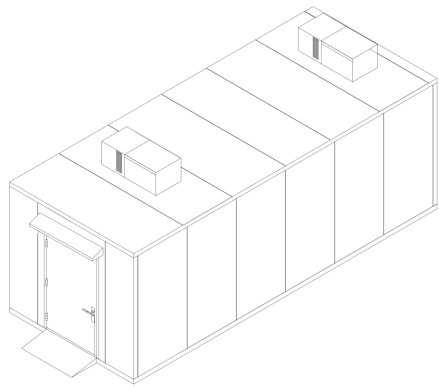
Outdoor structures for emergency response situations

- 24X12X9
- 48x12x9
- Reinforced Floor
- 36" Exterior Ramp
- Refrigeration with redundancy
- NSF certified

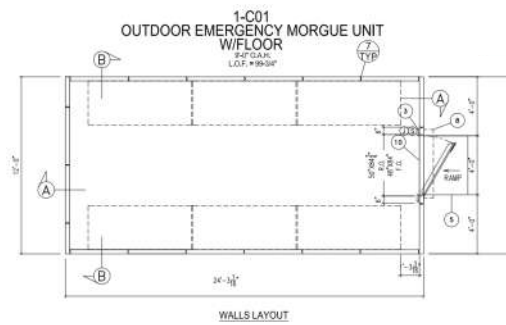
**Assembles in under 24-hours**



## DESIGN



## ENGINEER



## INSTALL



# ASSEMBLY LOCATIONS

Set up easily in parking lots, convention centers, stadiums, or any open space.

parking lots



stadiums



convention centers



open fields



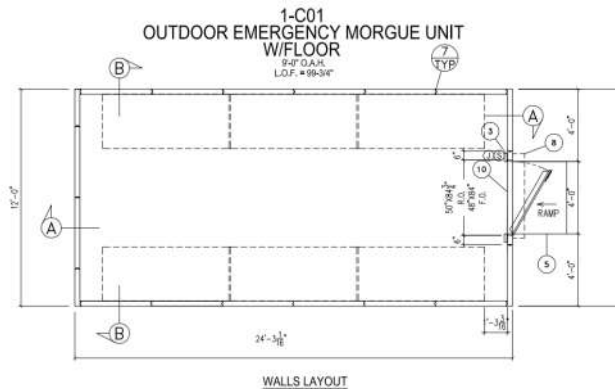
# FAST AND QUICK SOLUTIONS



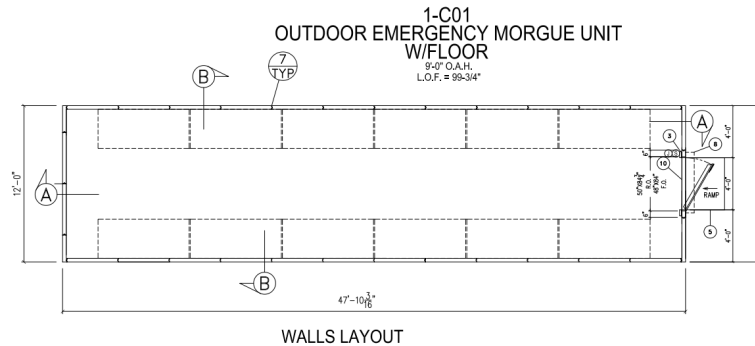
Pre-designed outdoor units offer fast delivery and quick set-up

Units ship with

- Reinforced floor
- Lighting
- Strip curtain
- Access door
- HVAC is sized to fit with redundancy units.



Option A: 24' x 12' x 9'  
Capacity: 24



Option B: 48' x 12' x 9'  
Capacity: 48

# PANEL CONSTRUCTION

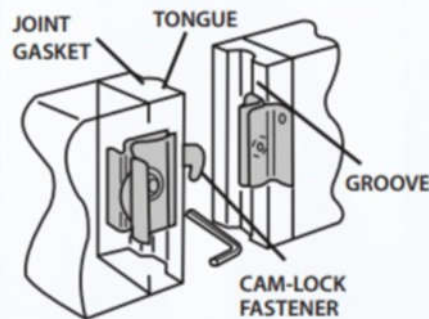


KPS Global® panels are modular for ease of assembly with interlocking tongue-and-groove perimeter panels.



- Metal clad surfaces with tongue and groove frames, are joined with a cam-lock that allows for easy and fast on-site modular assembly and ensure a tight seal.
- KPS Global uses a poured-in-place, HFC-free urethane where temperature, humidity and environmental conditions can be easily controlled.
- Panels are delivered in 3 ½" thickness

**PANEL JOINT COMPONENTS**



The largest manufacturer of cam-lock insulated panels in North America.



Offering production redundancy, reduced shipping costs and short lead times.



**725,000** SQUARE FEET of Manufacturing Space

**1.2 MILLION** SQ FT  
AVERAGE OUTPUT  
PER MONTH

(Equates to 37,500 8'x4' panels)

30%  
**70%**

■ Production Output Today  
■ Available Capacity

**600 YEARS**  
OF FACTORY MANAGEMENT  
EXPERIENCE



**825+**  
EMPLOYEES

**1000+**  
INSTALLATION  
CONTRACTORS



KPS Global stands ready to help.