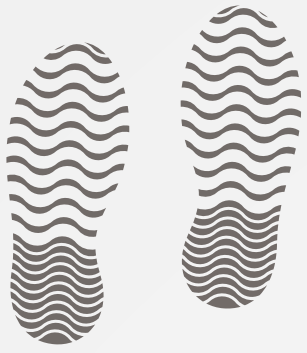




MAINTENANCE AND HOUSEKEEPING RECOMMENDATIONS



Walk-in floors can become slippery and hazardous if allowed to become wet, greasy or icy. Follow maintenance and housekeeping recommendations outlined below:



1

INSPECT THE CONDITIONS OF ABRASIVE COATED ANTI-SKID STRIPS ON RAMPS MONTHLY. REPLACE OR ADD ADDITIONAL STRIPS WHEN NECESSARY.

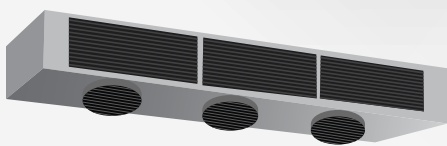
Abrasive coated anti-skid strips are factory installed on ramps. Additional strips are available from the factory.



2

KEEP ALL WALKWAYS SURFACES CLEAN AND FREE OF SPILLED LIQUID AND FOOD PARTICLES.

This includes the floor surface, hardwood floor racks, and diamond tread plate.



3

INSPECT REFRIGERATION EQUIPMENT FREQUENTLY FOR PROPER FUNCTIONING OF EVAPORATORS , DRAIN PAN HEATERS, DEFROST CONTROLS AND DRAIN LINE HEATERS.

Refers to manufacturers' instructions for the refrigeration system.



4

CONDENSATE WATER MUST NEVER BE PERMITTED TO DRIP ON THE WALK-IN FLOOR.

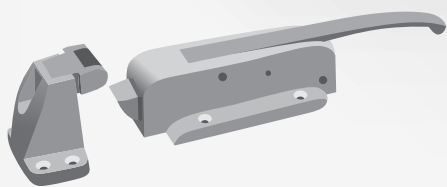
Refer to refrigeration system instructions for proper condensate drain installation.



5

IF ENTRY DOORS ARE TO BE HELD OPEN FOR PERIODS LONGER THAN 5 MINUTES, A VINYL STRIP CURTAIN SHOULD BE USED.

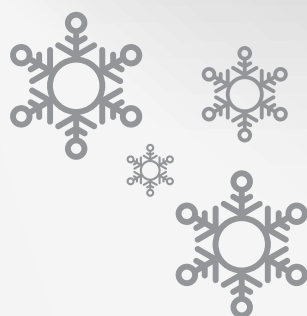
When freezer doors are opened for extended period of times, frost can form on the ceiling and floor due to the excessive condensation of warm, moist air inside the walk-in. This can result in the formation of an ice film on the wall, ceiling and floor surfaces.



6

INSPECT THE DOOR HARDWARE AND SWEEP GASKET MONTHLY FOR EASE OF OPERATION.

Door hardware is self lubricating and does not require periodic lubrication. Sweep gasket must be adjusted to allow free movement and proper seal. Any damaged hardware should be replaced immediately to prevent permanent damage to door.



7

FROST OR CONDENSATION APPEARING AROUND THE DOOR JAMB OR HEATED PRESSURE RELIEF VENT INDICATES THAT THE ELECTRIC HEATER IS INOPERABLE.

Check power supply (must be 115V) and electrical connections. Replace heaters if necessary.



8

ALL METAL SURFACES, MAGNETIC DOOR GASKETING AND DOOR SWEEP GASKET SHOULD BE CLEANED FREQUENTLY WITH A MILD DETERGENT AND HOT WATER. REMOVE ALL SOAP FILM AND DRY THOROUGHLY WITH A CLEAN CLOTH.

Never use high pressure hoses or large amounts of water to clean walk-ins.

