



KPS Global LLC
4201 North Beach Street
Fort Worth, TX 76137
(800) 633-3426



INSTALLATION MANUAL



Revised 7/22/24

TABLE OF CONTENTS

SECTION 1 RECEIVING GUIDELINES

Page 3.....	RECEIVING INSPECTION
Page 3.....	PANEL COUNT AND HARDWARE

SECTION 2 GETTING STARTED

Page 4.....	SITE PREPARATION
Page 5.....	OPERATION OF CAM ACTION QUICK FASTENER
Page 6.....	GENERAL INSTALLATION GUIDELINES

SECTION 3 INSTALLATION INSTRUCTIONS

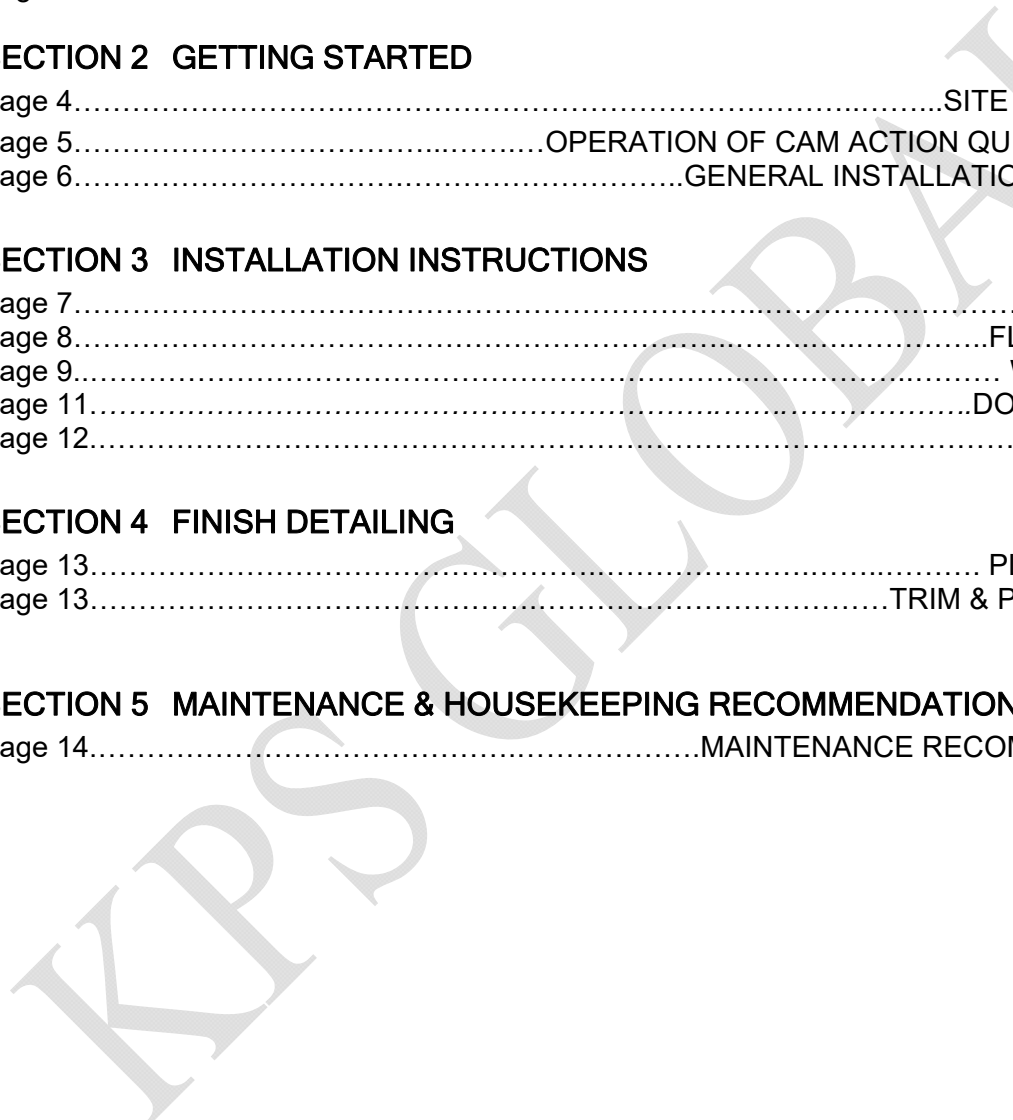
Page 7.....	SCREED
Page 8.....	FLOOR PANELS
Page 9.....	WALL PANELS
Page 11.....	DOOR SECTIONS
Page 12.....	TOP PANELS

SECTION 4 FINISH DETAILING

Page 13.....	PLUG BUTTONS
Page 13.....	TRIM & PENETRATIONS

SECTION 5 MAINTENANCE & HOUSEKEEPING RECOMMENDATIONS

Page 14.....	MAINTENANCE RECOMMENDATIONS
--------------	-----------------------------



RECEIVING GUIDELINES

To insure proper set-up, and many years of trouble free use, read and follow these instructions and the assembly drawings carefully before and during installation.

INSPECTION

Carefully check the outside of the crate for visible signs of damage. Then check the contents for damage. If the contents are damaged, immediately file a "claim of damaged goods" with carrier and note damage on freight bill of lading. Immediate notification of the KPS Global Walk-In Service/Installation Team is required, along with pictures of the damage.

PANEL COUNT & HARDWARE

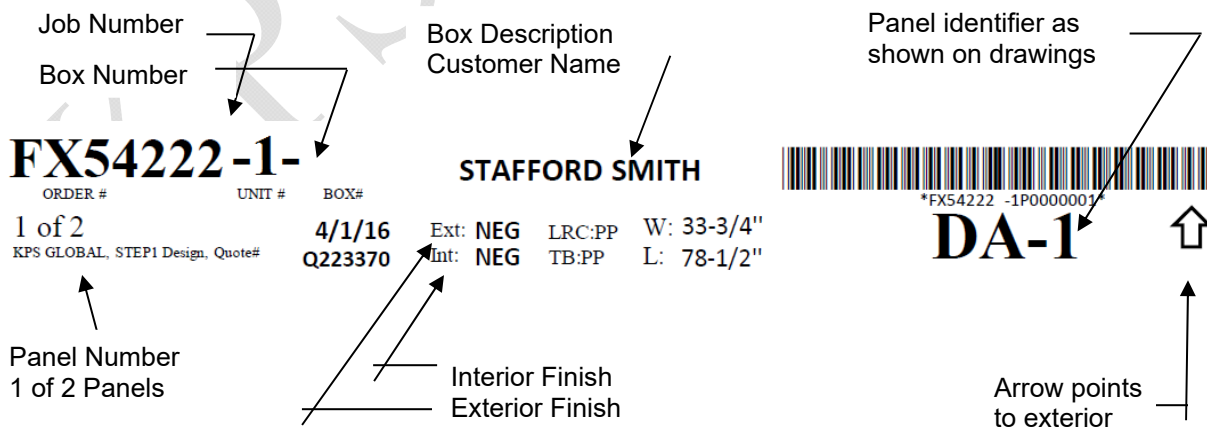
The utmost care was taken to ensure you receive all the components. Using the packing list, count the wall panels, corners, tops, doors and floors where applicable. Locate and verify the accessory and hardware package(s). Put accessory and hardware package(s) in a safe place as you will need them to finish out the unit.

STORAGE OF PANELS ON ARRIVAL

Panels must be stored in a dry area. If they are to be stored in the building, the panels need to be placed in a low traffic area away from moving equipment and covered to protect them from paint overspray and other construction site debris. If the panels must be stored outdoors, they must be properly covered to protect them from elements. Improper storage or protection may nullify the warranty.

PANEL IDENTIFICATION

Each panel is labeled to aid in identification and proper placement.
 Contact KPS Global immediately if any labels are missing



SITE PREPARATION



STOP *Before laying out the box, or assembling any panels, the building floor should be cleaned of all debris and the floor will need to be checked for levelness. These steps can save installation time and help to ensure that the box seals properly.*

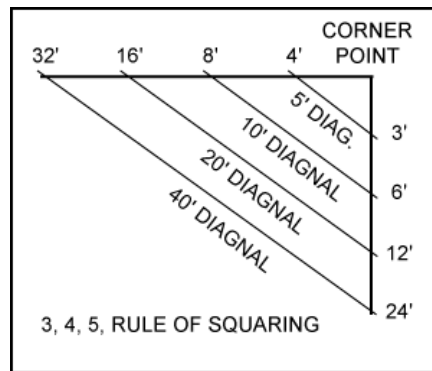
1. Using the supplied assembly drawing (packed in hardware box), mark perimeter of screed, wall or floor sections on the existing building floor using a chalk line. (Fig. 1 & 2)



NOTE *A 1" minimum clearance is required between unit and adjacent structures to allow for wall surface irregularities and air circulation.*

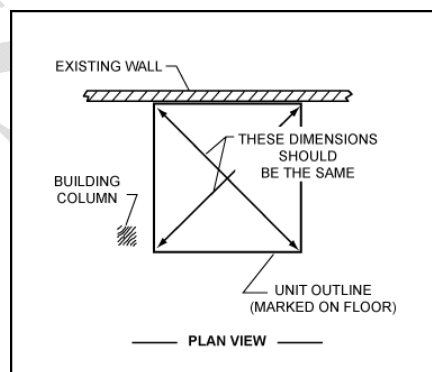
2. Perimeter lines must be square and parallel. Use the 3,4,5 rule of squaring illustrated in Fig. 1

FIG. 1 – 3,4,5 RULE OF SQUARING



3. After establishing the first two lines, measure and establish the rest of the perimeter. Fig. 2

FIG. 2 – FLOOR PLAN



CAUTION *If the installation area is not level, find the high point of the perimeter line. The floor, floor screed, and wall(s) must be leveled to this point. If this is not done properly wall and ceiling panels will not align causing problems with the installation and operation of the doors.*

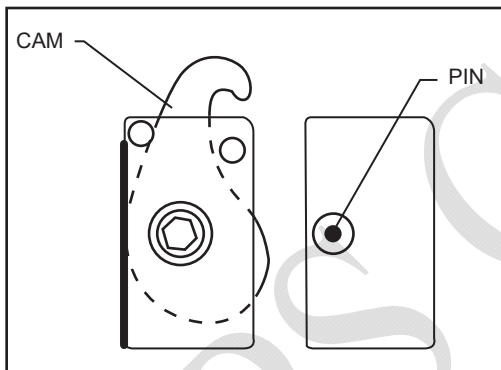


Before starting to assemble unit, you should understand how the cam action fasteners operate.

OPERATION OF CAM ACTION FASTENERS

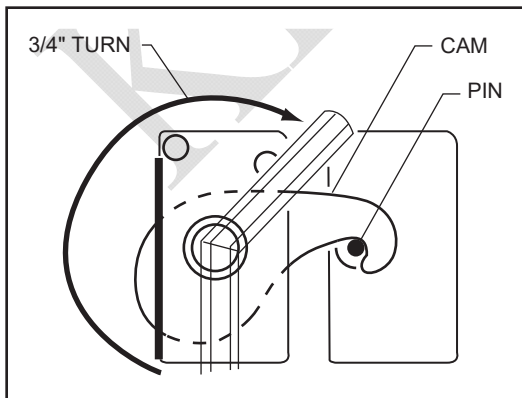
Panels are held together with a Cam Lock and Pin assembly. The Cam Lock should never be used to bring the panels together. The panels should be set in place and inspected to make sure that the top of the panels are level before the cam is locked. The Cam Lock is located in the tongue side of the panel with a Cam Hole drilled on the interior side for the Cam Wrench (Note: Cam Holes will be located on the interior side of the ceiling panels unless directed differently by the customer or if there is interior support steel) and the Locking Pin is located in the groove side of the panel. In order to get the proper seal on the box the Cam Locks must be completely locked together. This is achieved by using a Cam Wrench (a 5/16" hex Cam Wrench will be sent with the panels and is located in the accessory box) to turn the Cam Lock in a clockwise motion (approximately 3/4 of a complete turn) until it cannot be turned any further (See Fig 3a & 3b). The panels should be tight at the joint and the gasket should be compressed. If you do not have a tight joint, then the Cam Lock needs to be completely reset and the panels need to be adjusted and relocked. (Note: To reset the Cam Lock you have to first make sure that the Cam Lock has been fully turned to the locked position and then turn the cam in a counter-clockwise direction until it cannot be turned any further.)

FIG. 3a – CAM LOCK (UNLOCKED)



If a problem should occur, such as having to unlock a panel that was not properly positioned, you must turn the handle counter clockwise until it stops to reset the cam action.

FIG. 3b – CAM LOCK (LOCKED)



Using a hammer to drive the cam wrench in the cam fastener may result in damage to the fasteners. Clear hole of debris if wrench cannot be inserted.

INSTALLATION OF PANELS



Once again it is essential that the area where the unit(s) will be installed is clean of debris and is level. If this step has been skipped, it may result in future issues with panel alignment, improper joint seal, and poor door operation.

It is important that you review the assembly drawings before starting the installation. Review the detail on the print to see what type of screed will be used and the proper installation of the screed. Once the screed is installed you can begin installing the wall and corner panels. See figures 4 and 5 below showing incorrect and correct wall installations.

FIG. 4 – INCORRECT INSTALLTION

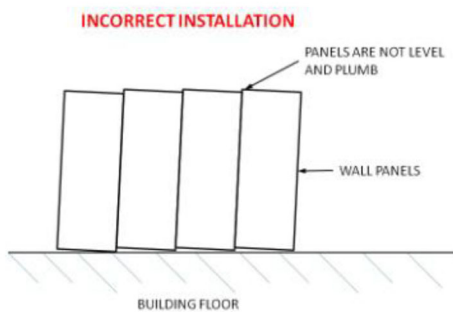
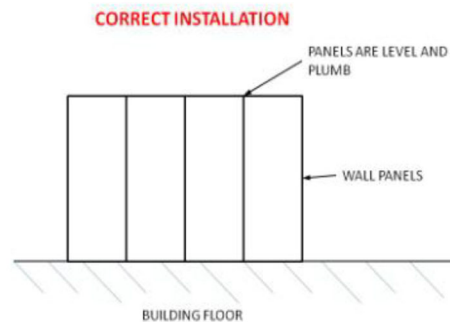
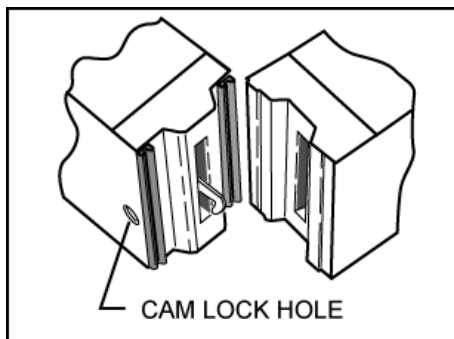


FIG. 5 – LEVEL & PLUMB



Before completing all of the wall panels, you will need to begin installing the Ceiling Panels. The ceiling panels will lock together in the same manner as the wall panels, and care must be taken when aligning the ceiling panels to ensure an air tight seal. Remember to look at the assembly drawings to verify how the ceiling panels will be secured to the wall panels (i.e. Lag Down or Lock Down). If the ceilings are to be lagged down, be sure not to overtighten the lags, which would cause the exterior metal on the ceiling panels to sink in. Over-tightening can cause the panel to lose its structural integrity.

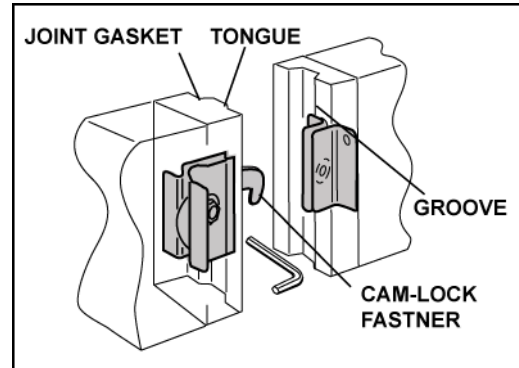
FIG. 6 – TONGUE & GROOVE



All insulated panels have a tongue and a groove perimeter edge. This interlocking design and the panel edge gaskets will result in an air-tight walk-in, if installed square and level. Refer to the assembly drawing to familiarize yourself with the general layout and specific panel placement and markings.

The tongue side of the panel and cam lock holes are on the right when viewed from the interior of the walk-ins (standing on the inside and looking out), because the installation is accomplished from within. The exact location of the tongue (T) and groove (G) for ceiling and floor panels, if required, will be shown on the assembly drawing.

FIG. 7 – CAM LOCK

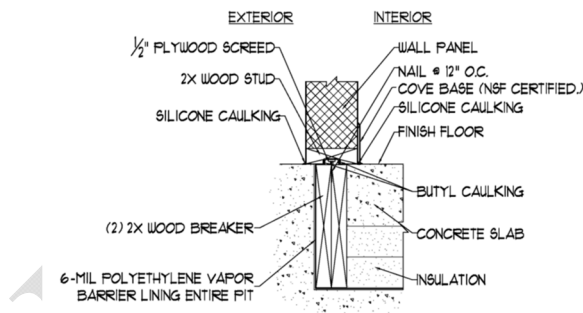


INSTALLATION INSTRUCTIONS

SCREED INSTALLATION

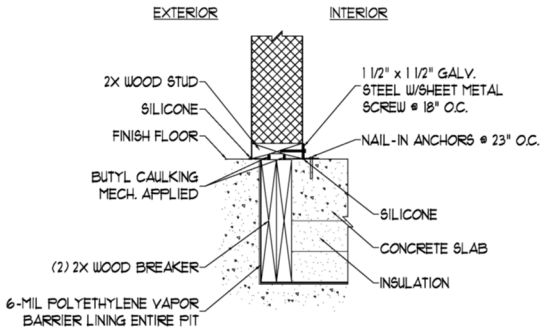
There are many styles of screeds used in INSTAWALL™. The type of screed furnished with your unit will be identified on the assembly drawing.

FIG. 8 – CONCEALED STRIP SCREED



Concealed STRIP screeds are shipped in 8' lengths and are field cut to fit box dimensions.

FIG. 9 – FLOOR ANGLE



The angle base screed is shipped in 10' lengths, and field cut to fit box dimensions.



CAUTION

Be sure you have the correct screed profile before fastening to floor. There are many screed types. See assembly drawings for correct screed.

1. Place the screeds on the floor using the chalk lines as guides (See Fig. 1 & 2) where factory cut screed is used, screed sizes and layouts are identified in the assembly drawings.
 - Some screeds are pre-cut and marked at the factory.
2. Start at back corner and fasten screed in place for two adjoining walls. Fasten screed as shown on assembly drawing with fasteners provided.
 - To insure proper fit, do not fasten screed for remaining walls until wall panels for the first two walls are assembled.

FLOOR PANEL INSTALLATION (if applicable)

1. Mark and level floor according to site preparation (Page 4)
2. Lay out floor panels in correct sequence according to assembly drawings making sure they are level.



CAUTION

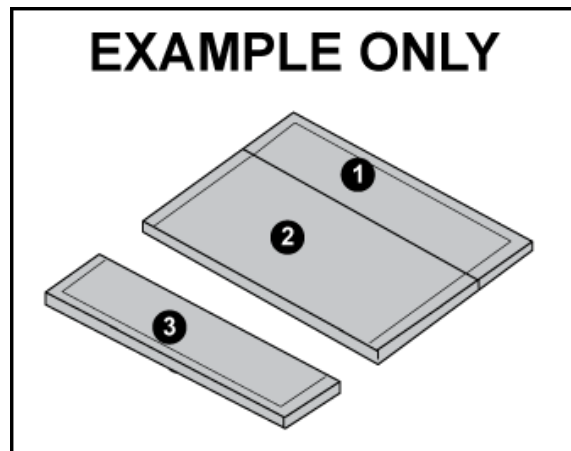
See Fig. 13 before locking any panels together.



NOTE

Floor panel layout is identified on the assembly drawing. Panel labels correspond with identifiers on the assembly drawing.

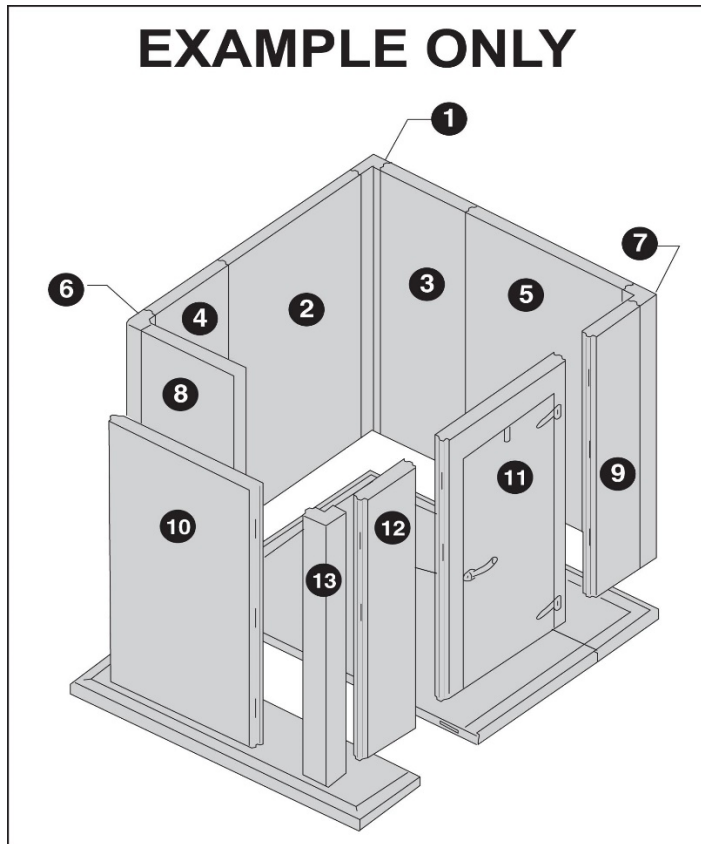
3. Lock floor panels together, making sure edges are flush and square.

FIG. 10 – FLOOR INSTALLATION

INSTALLATION OF WALL PANELS

1. Start with a back corner and work around the unit both ways, ending with a front corner.
(Per Example, Fig. 11)
 - See Fig. 10 before locking any panels together.
2. Begin wall panel assembly by cam-locking back corner panel and one wall panel together.
 - See assembly drawing for correct panel placement and sequence, tongue and groove directions.
3. Work around unit in both directions, ending at opposite corner.
 - Be sure edges of walls are flush across the top and at seams. (See Fig. 5)
 - Foam under panels where gaps exceed ¼". Trim excess foam and apply an even layer of sealant to form a vapor barrier over all foamed joints.

FIG. 11 – WALL INSTALLATION (EXAMPLE)



INSTALLATION OF DOORS AND SECTIONS

1. Door sections will be installed in sequence along with wall panels.
2. Use a level to set door section plumb and level (Fig. 12)
3. Install door section stabilizers on interior at both sides of opening or as specified on assembly drawing. See Fig. 13 assembly drawing for stabilizer type and fasteners.

FIG. 13 DOOR STABILIZERS

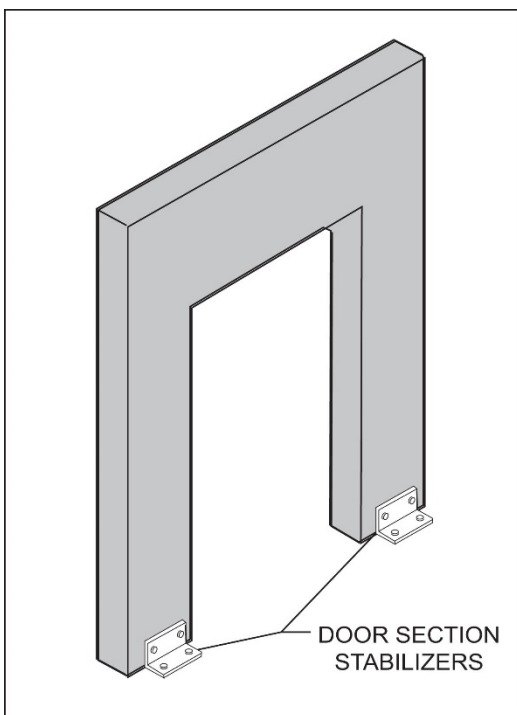
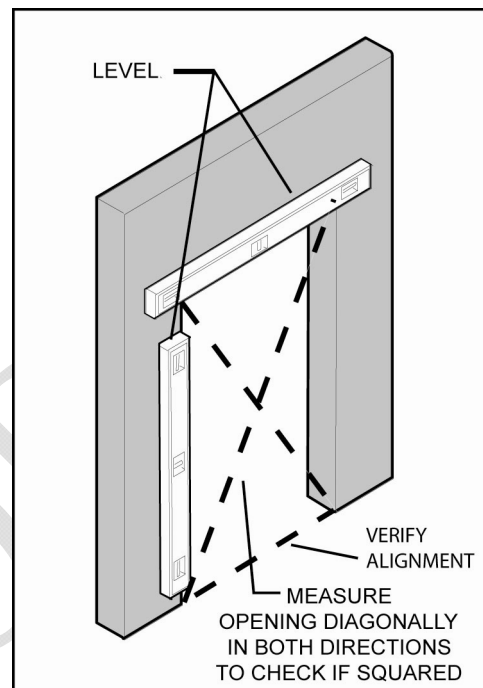


FIG. 12 SQUARE DOOR SECTION



Be sure door section is installed plumb and level.

INSTALLATION OF TOP PANELS

1. Use assembly drawings for correct panel placement and sequence.
2. Begin with an end section (Fig. 14 for example).

CAUTION See Fig. 13 before locking any panels together.

3. Place top panels in position, per the assembly drawings, on top of wall panels.
4. Check panel alignment.

NOTE Be sure edges of ceiling panels are flush with wall panels.

5. Cam-lock top panels together.
6. After several top panels are in position and locked together, begin lag-bolting or cam-locking ceiling panels to wall panels.

FIG. 14 TOP PANEL INSTALLATION

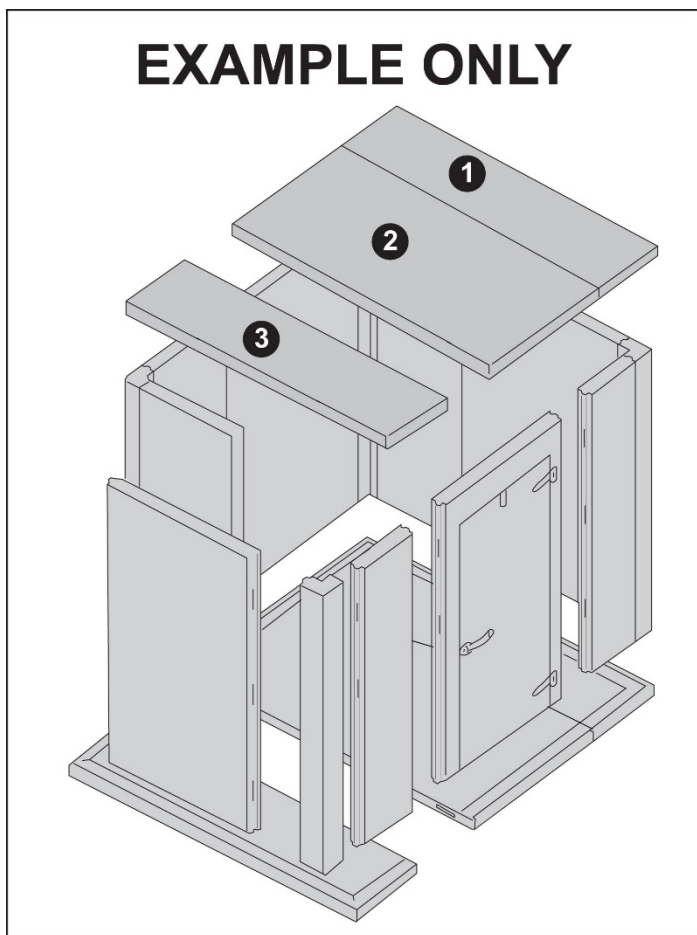
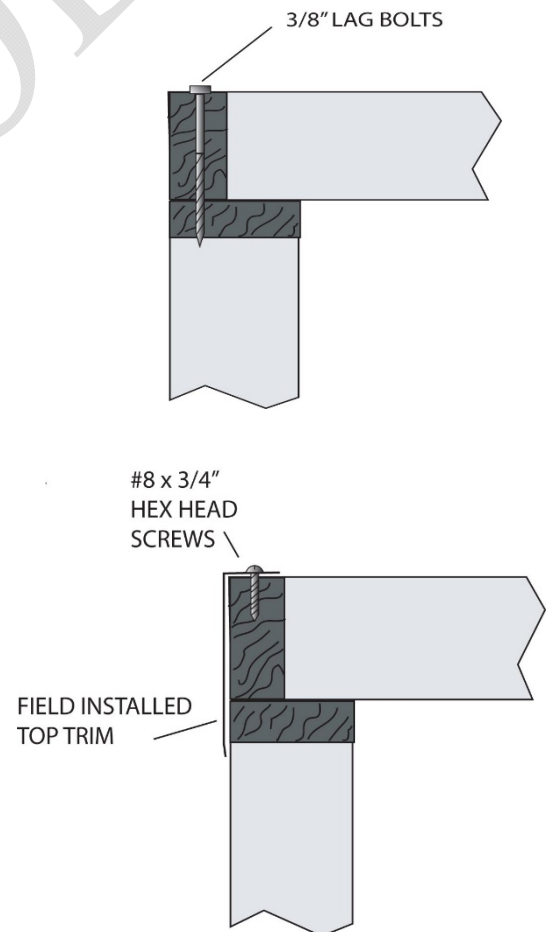


FIG. 15 LAG BOLT TOPS TO WALLS/TRIM INSTALLATION

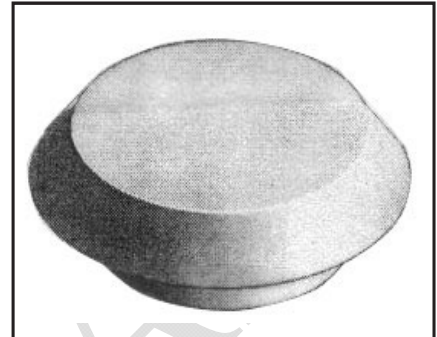


NOTE Top trim is shipped in 10' lengths and must be field cut as needed.

FINISH DETAILING OF WALK-IN AFTER ERECTION

1. Remove protective covering from panels, if applied.
2. Check that all “Cam Locks” are engaged.
3. Install plug buttons in Cam Lock wrench access holes (Fig. 16).

FIG. 16 – PLUG BUTTONS



TRIM AND PENETRATIONS

1. Install any trim that is supplied. See assembly drawing for trim type and location.
2. Check that all service penetrations have been sealed.

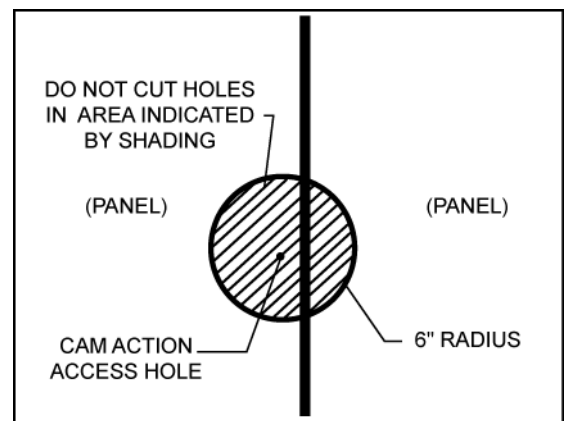


Gas emitted by curing concrete floors or tile grout will damage panel finishes. Adequate ventilation must be provided when the concrete floor or tile setting bed and grout has not properly cured. Leave all doors open for ventilation. If concrete or tile is to be installed after walk-in is erected, protect the wall finish by applying a protective covering.



In some instances it will be necessary to make penetrations through the walk-in for electrical or refrigeration lines. Some areas of walk-in panels contain working parts and should not be penetrated. (Fig 17) Do not make penetrations within 2” of cam-lock holes or panel seams.

FIG. 17 – PENETRATION



3. Completely seal penetrations with sealant after electrical or plumbing lines are run through panels.



Be sure to completely seal all panel penetrations. Electrical conduit should also be sealed at interior around wires.



CLEAN UP

Clean up is also very important for customer satisfaction and overall appearance. Clean panels of any dirt, metal shavings, or other types of debris. Using a non-abrasive, clean, dry cloth for dust removal is critical. The surfaces are metal in most instances and will scratch. A petroleum-based cleaner such as Low VOC Mineral Spirits will loosen butyl and silicone residue and should be used for easier clean-up.

****Important**** Cleaners should only be used in well-ventilated areas. Personnel must take proper steps to ensure the safety of crews during panel cleaning process, including use of appropriate PPE for the product being used.

After the panels have been wiped down, touch-up paint will need to be applied on all scratches on painted metals. Touch-up paint is provided by KPS Global and will be located in the materials box along with an application brush.

MAINTENANCE AND HOUSEKEEPING RECOMMENDATIONS

WARNING: Walk-in floors can become slippery and hazardous if allowed to become wet or greasy. Follow maintenance and housekeeping recommendations outlined below:

- 1. INSPECT THE CONDITIONS OF ABRASIVE COATED ANTI-SKID STRIPS ON RAMPS MONTHLY. REPLACE OR ADD ADDITIONAL STRIPS WHEN NECESSARY.** Abrasive coated anti-skid strips are factory installed on ramps. Additional strips are available from the factory.
- 2. KEEP ALL WALKWAY SURFACES CLEAN AND FREE OF SPILLED LIQUIDS AND FOOD PARTICLES.** This includes the floor surface, hardwood floor racks, and diamond tread plate.
- 3. ALL METAL SURFACES, MAGNETIC DOOR GASKETING AND DOOR SWEEP GASKET SHOULD BE CLEANED FREQUENTLY WITH A MILD DETERGENT AND HOT WATER. REMOVE ALL SOAP FILM AND DRY THOROUGHLY WITH A CLEAN CLOTH.** Never use high pressure hose or large amounts of water to clean walk-in.