

**DEFENDOOR™**

## DEFEND YOUR DOOR

Upgrade to the **DEFENDOOR** system for extra defense against day-to-day wear and tear.



LEARN MORE

### SPECIFICATIONS

High Density Polyethylene (HDPE) Material

18ga Galvanized Steel Corner Guards

11ga Galvanized Steel Stabilizers

Available to Fit 36" 42" 54" and 60" Doors

Custom Sizes Available Upon Request

NSF Compliant

USDA & FDA Approved

Protect your walk-in doors with the KPS Global **DEFENDOOR** system. The Ultimate Kit offers impact and structural protection against damage from pallet jacks, carts or everyday use.



2x more impact resistant than metal kickplates



40% lighter than stainless steel kickplates



Little to no visible damage after multiple impacts



Protects interior and exterior door surface and side sections

## DEFENDOOR KITS



**STABILIZER KIT**

*Includes*  
Stabilizers (x2)



**EXTERIOR KIT**

*Includes*  
Exterior Shield  
Side Shields (x2)  
Exterior Corner Guard



**INTERIOR KIT**

*Includes*  
Interior Shield  
Interior Corner Guards (x2)  
Stabilizers (x2)



**ULTIMATE KIT**

*Includes*  
Interior Shield  
Exterior Shield  
Side Shields (x2)  
Interior Corner Guards (x2)  
Exterior Corner Guard  
Stabilizers (x2)

## DEFENDOOR STABILIZER



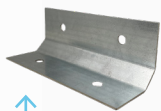
The **DEFENDOOR** stabilizer offers maximum impact protection. This product is 7.5x larger and 2x thicker than alternatives on the market, stretching onto the adjacent panel for added strength. The **DEFENDOOR** stabilizer can be purchased as a kit or individually.



↑  
*DEFENDOOR Stabilizers*

- 7.5x larger
- 2x thicker
- 4 additional anchor points
- 7/8" wrap around corner for additional protection to the lower door jamb guard

- 8" extension for additional anchors onto the adjacent panel to maximize impact protection
- Rounded corners to eliminate sharp edges
- Semi-gloss smooth powder coated black finish



↑  
*Standard Stabilizer*

When faced with an impact force equivalent to a 500 lb pallet running into the panel at 4.5 mph (approximately 450 joules), the **DEFENDOOR** stabilizer saw no visible damage. Conversely, the standard stabilizer saw significant aesthetic and performance deterioration.